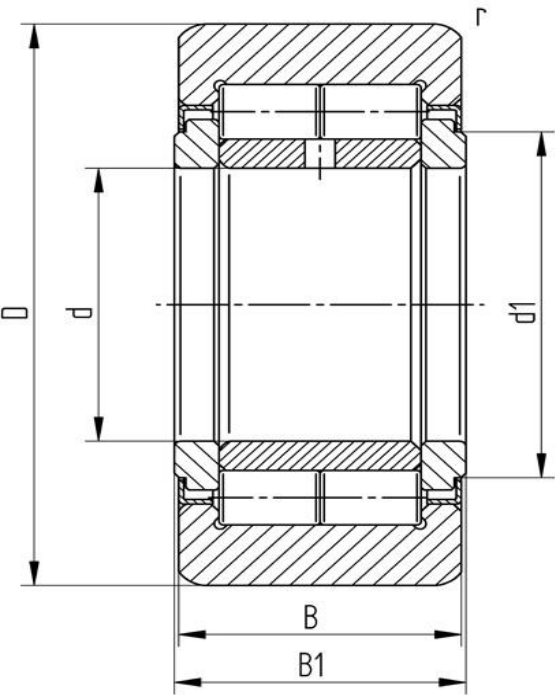


Data sheet
Support roller NUTR 25 62 (crowned, with axial guidance, labyrinth seal)

Designation	NUTR 25 62
Type	crowned
D [mm]	62
d [mm]	25
d1 [mm max.]	31
B1 [mm]	25
B [mm]	24
r [mm]	1
r1 [mm]	0,3
Dynamic load Crw[N]	35500
Static load	50000
Speed limit [min-1]	3400



Every specification has been edited and verified carefully. STI Bearings GmbH assumes no liability for potential errors or incompleteness. Technical modifications are subject of changes.
 © 2020 by STI Bearings GmbH
 Reproduction, even excerpts, only with our approval.